

Dehumidifier / Air Conditioner

Data Sheet



The RH-Cube Mini is the most efficient and cost-effective way to control humidity, enhance comfort, and boost indoor air quality. It solves residential humidity issues in hot humid climates and is suitable for homes up to 3000 square feet.

It provides all the benefits of supplemental whole house dehumidification with none of the drawbacks of heat load, noise, or vibration. It is designed for applications that need additional first stage cooling. It removes over 170 pints of water per day and provides 5000 BTUs of sensible cooling to the living space.

Because of its high efficiency split air architecture, there is no added heat load. Condenser waste heat is released outdoors.

FEATURES

- Split-air architecture – similar to a conventional air conditioner
- Economic – Can cut total air conditioning bill in half, and prevent costly repairs due to mold damage.
- Modular for easy installation – comes apart into two sections so that it can be maneuvered through narrow openings and tight spaces, and be installed by a single technician.
- Versatility - Three choices for the delivery air duct connection simplifies installation
- Serviceability - Completely serviceable for cleaning and maintenance from the front of the unit.
- Inexpensive to service - Built from easily sourced off-the-shelf air conditioning components. Serviceable by any certified HVAC technician without the need for specialized training.

SPECIFICATIONS

Unit Parameters

Model **DA18-DX-V1M1F1**
Part number **DA-900-0004**
Cabinet Finish **Painted**
Refrigerant Type **R410A**

Dimensions and Weight

Length **45** in
Width **28** in
Height **38** in
Equipment Weight **310** lbs
Shipping Weight **350** lbs
Minimum maneuvering weight **80** lbs

Electrical Data

Voltage..... **110/120 - 1 - 60** V-P-Hz
Fan Motor FLA* **3.2** Amps
MCA* **2.9** Amps
Max Fuse..... **15** Amps
Typical Power Consumption..... **340** Watts

*FLA - full-load amperage MCA - Minimum Current Ampacity (0.8 FLA)

Fan Performance

Blower power..... **336** Watts
STP performance @ 0" wg **540** cfm
STP performance @ 0.2" wg **505** cfm
STP performance @ 0.35 wg **475** cfm

Plumbing / Refrigerant

Refrigerant **R410A**
Liquid Line Diameter **3/8** in
Suction Line Diameter **3/4** in
Drain connection **3/4** in NTP female

Output Control

Supplied Voltage **24** VAC
Supplied Current **3** Amps
Power **40** VA
Blower Switch **Auto / Always On**

Ducting

Return Duct Opening **12 x 18** in
Minimum Return Duct **3** ft
Supply Duct Opening **8 x 14** in
Supply Duct Location **left, top, or back**

Condenser

Type **DX**
Supported Condensers **1.5** Ton

Servicing

Front access for all serviceable components.

Performance

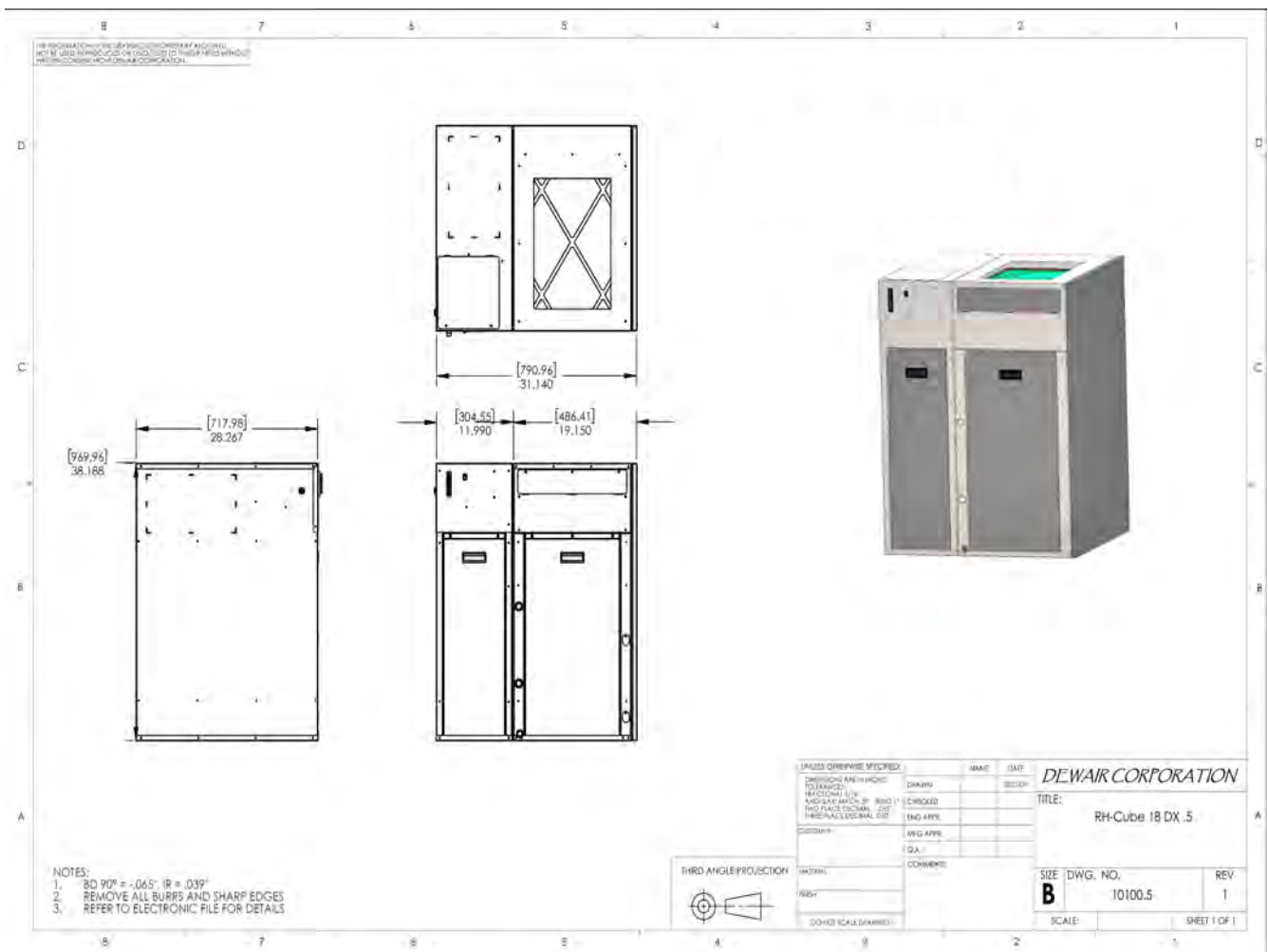
At 80°F 60% RH with a 1.5 ton condenser:

Efficiency (liters/kW) **5.5**
Water Removal (lbs/Hr) **7.2**
Latent Cooling (BTUs) **6912**
Sensible Cooling (BTUs) **4000**
Total Cooling (BTUs) **10912**
Latent / Total BTU Ratio **0.63**

Warranty

The warranty period is one (1) year on all parts. The warranty is for the original owner only and is not available for subsequent owners.





Installed Dimensions and Weights	
Length	30 in
Width	28.38 in
Height	38.18 in
Weight	210 lb

Shipping Dimensions and Weights	
Length	35 in
Width	33 in
Height	46 in
Shipping Weight	250 lbs

Legal: Copyright© 2022—DewAir™ Corporation. All rights reserved. Specifications and benefits believed correct at the time of release and may vary depending on specific conditions and other circumstances. This brochure is subject to change without advanced notice. Product images may vary slightly. No warranties expressed or implied other than our product warranty. No DIY—must be installed by a certified HVAC contractor.

