



DEWAIR DUO

Dehumidifier / Air Conditioner

Data Sheet



The DewAir DUO delivers the cooling of an air conditioner and the dehumidification of a whole home dehumidifier. It is suitable for living spaces up to 1500 sq ft. It delivers a drier more comfortable environment than the typical overly-cool and damp environment delivered by a conventional air conditioner alone.

The DUO, as its name implies, can change its focus between dehumidifying and cooling, depending on what is needed.

For living spaces up to 1200 sq ft, the DUO is paired with a 2 ton 2 stage condenser, of which there are several available on the market to choose from. For living spaces up to 1500 sq ft, or if increased ventilation is desired, the DUO is paired with a 3 ton Bosch BOVA036 condenser.

In cooling mode the DUO delivers up to 20,000 Btus of sensible cooling. In dehumidification mode the DUO removes 11 lbs of water per hour while still delivering 14,000 Btus of cooling.

FEATURES

- Split-air architecture – similar to a conventional air conditioner
- Economic – Can cut total air conditioning bill in half, and prevent costly repairs due to mold damage.
- Modular for easy installation – can be disassembled into three sections so that it can be maneuvered through narrow openings and tight spaces, and be installed by a single technician.
- Versatility - Four choices for the delivery air duct connection simplifies installation
- Serviceability - Completely serviceable for cleaning and maintenance from the front of the unit.
- Inexpensive to service - Built from easily sourced off-the-shelf air conditioning components. Serviceable by any certified HVAC technician without the need for specialized training.



SPECIFICATIONS

Unit Parameters

Model **DA18-DX-V1M1F1**
Part number **DA-900-0001**
Cabinet Finish **Painted**
Refrigerant Type **R410A**

Dimensions and Weight

Length **45 in**
Width **28 in**
Height **38 in**
Equipment Weight **310 lbs**
Shipping Weight **350 lbs**
Minimum maneuvering weight **80 lbs**

Electrical Data

Voltage..... **110/120 - 1 - 60 V-P-Hz**
Fan Motor FLA* **3.2 Amps**
MCA* **2.9 Amps**
Max Fuse..... **15 Amps**
Typical Power Consumption..... **340 Watts**

*FLA - full-load amperage MCA - Minimum Current Ampacity (0.8 FLA)

Fan Performance

Blower power..... **336 Watts**

Dehumidifier Mode:

STP performance @ 0" wg **650 cfm**
STP performance @ 0.2" wg **610 cfm**
STP performance @ 0.35 wg **575 cfm**

A/C Mode:

STP performance @ 0" wg **720 cfm**
STP performance @ 0.2" wg **690 cfm**
STP performance @ 0.35 wg **675 cfm**

Plumbing / Refrigerant

Refrigerant **R410A**
Liquid Line Diameter **3/8 in**
Suction Line Diameter **3/4 in**
Drain connection **3/4 in NTP female**

Output Control

Supplied Voltage **24 VAC**
Supplied Current **3 Amps**
Power **40 VA**
Blower Switch **Auto / Always On**

Ducting

Return Duct Opening **12 x 18 in**
Minimum Return Duct **3 ft**
Supply Duct Opening **8 x 14 in**
Supply Duct Location **left, right, top, or back**

Condenser

Type **DX**
Supported Condensers **2 Ton to 3 Ton**

Servicing

Front access for all serviceable components.

Example Performance

Indoor condition: 75°F/60% RH

Outdoor Condition: 90°F

With 2 Ton 2 Stage Condenser

Dehumidifier mode:

Water removal **7 lbs/hr**
Sensible cooling **7000 Btu**

Cooling Mode:

Water removal **6 lbs/hr**
Sensible cooling **14,000 Btu**

With 3 Ton Bosch BOVA036 Condenser

Dehumidifier mode:

Water removal **11 lbs/hr**
Sensible cooling **14000 Btu**

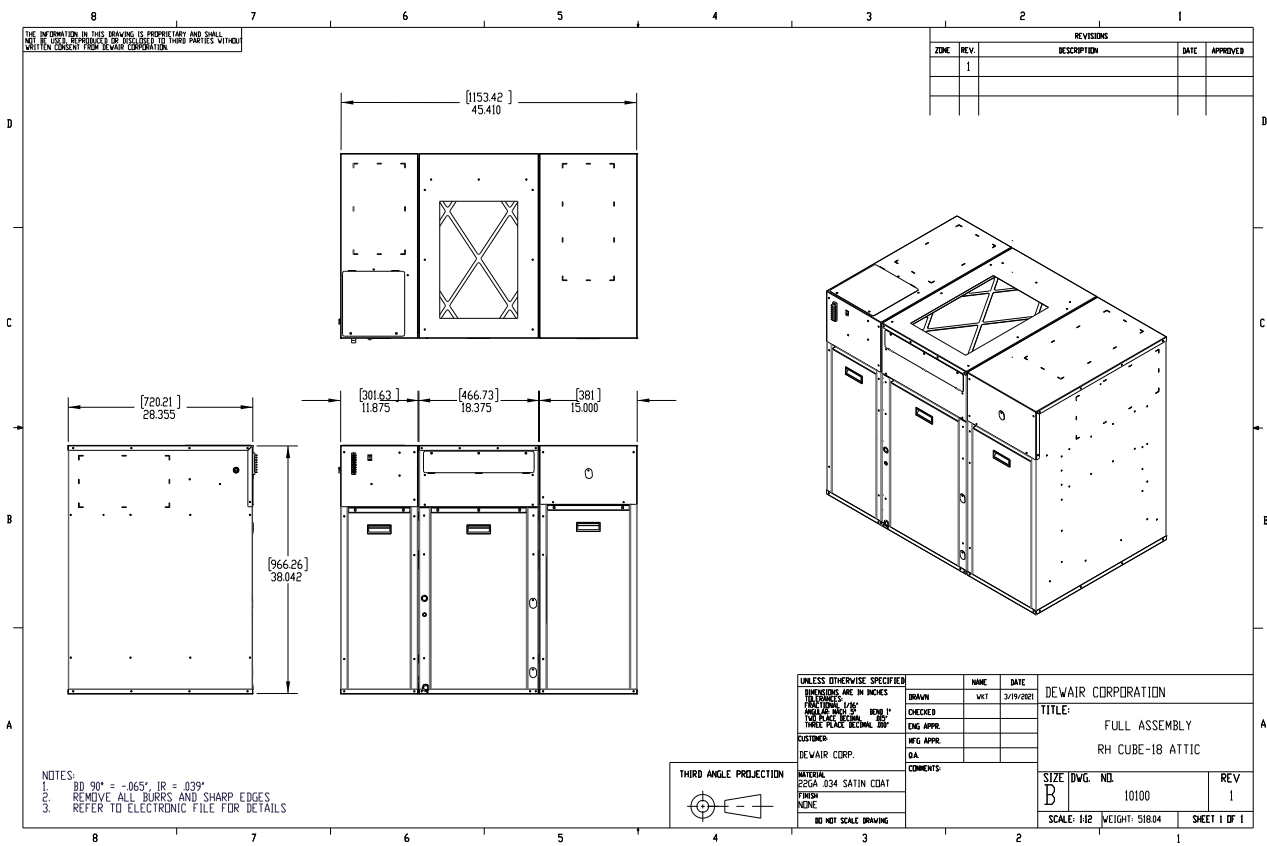
Cooling Mode

Water removal **9 lbs/hr**
Sensible cooling **20000 Btu**

Warranty

The warranty period is one (1) year on all parts. The warranty is for the original owner only and is not available for subsequent owners.





| Installed Dimensions and Weights | |
|----------------------------------|----------|
| Length | 45.41 in |
| Width | 28.38 in |
| Height | 38.18 in |
| Weight | 310 lb |

| Shipping Dimensions and Weights | |
|---------------------------------|---------|
| Length | 47 in |
| Width | 33 in |
| Height | 46 in |
| Shipping Weight | 350 lbs |

Legal: Copyright© 2021—DewAir™ Corporation. All rights reserved. Specifications and benefits believed correct at the time of release and may vary depending on specific conditions and other circumstances. This brochure is subject to change without advanced notice. Product images may vary slightly. No warranties expressed or implied other than our product warranty. No DIY—must be installed by a certified HVAC contractor.

